

HYDRATION SOLUTIONS FOR SCHOOLS AND CLUBS

2026

urban+



MAKING LIFE BETTER
urban fountains and furniture

POPULAR SELECTIONS

INDEX

	PAGE
+ PRODUCT DESIGN ETHOS AND KEY SELLING POINTS	1
+ CF400 SERIES	2
+ WHY CHOOSE THE CF400?	3
+ WALL MOUNTED & FLOOR MOUNTED	4-5
+ FLOOR MOUNTED COMPACT	6
+ WALL MOUNTED COMPACT	7
+ POPULAR CHOICES	8
+ NOT SURE WHAT TO CHOOSE?	9
+ FLOOR MOUNTED & WALL MOUNTED	10-11
+ DO YOU NEED TO BUY NEW?	12
+ WALL MOUNTED MULTI - STRIPS	13
+ MEET OUR CHILLER UNIT	14
+ VANDALISM PROTECTION WARRANTY	15
+ URBAN + AND THE CIRCULAR ECONOMY	16
+ CONTACT US	17

URBAN FOUNTAINS & FURNITURE

Making Life Better

PRODUCT DESIGN ETHOS

- + Our material choices and product design features are focused on ensuring the longevity and sustainability of each product.
- + We prioritise craftsmanship over mass-produced, machine-made parts and choose to handcraft where it enhances and improves the product.
- + The product design process carefully balances the demands of manufacturing and fabrication with consumer expectations for functionality and aesthetics.
- + Our seamless design approach ensures that what's hidden is just as important as what's visible, and we do not compromise on areas that aren't immediately seen.
- + Our products are built for strength and durability, with no built-in obsolescence, and come with a guarantee for long lasting performance.
- + We use anti-vandal materials, design features, and manufacturing methods to protect against vandalism.



KEY SELLING POINTS

+ PRODUCT FEATURES

- + Australian-made. All products are manufactured locally in our facility based in Yatala, QLD and are distributed nationally.
- + All drinking fountains are Watermark-certified
- + ISO Quality Management System certified
- + Vandal resistant
- + Disabled accessible options
- + Product branding options
- + Choose from Dulux's full powder coat colour range
- + Customisation of standard products allowed
- + Full custom design service available
- + Service, Maintenance and Refurbishment services offered
- + Product leasing opportunity



Australian Made



Sustainably Made



CF400 SERIES

Ideal for Junior Schools, Senior Schools
and Sports Clubs



WHY CHOOSE THE CF400?

Urban+ designed and launched the CF400 chilled hydration station to meet the needs and requirements of schools and sporting clubs. Built with sustainability and circularity in mind, it reflects our commitment to integrating circular economy principles across our business.

The CF400 blends modern aesthetics with durability and easy maintenance. Constructed primarily from marine-grade 316 stainless steel, it is designed to withstand all weather conditions while maintaining its performance and appearance. Beyond its functionality, the CF400 is built for longevity, with a design that allows for easy refurbishment, repurposing, or recycling at the end of its service life.

Our tapware is specifically engineered for continuous, heavy use. Featuring reinforced collars and integrated security measures, it is built to resist wear, misuse, and vandalism, ensuring long-term reliability in demanding environments.

The CF400 comes with a variety of options including wall mounted, floor mounted, with or without chilling capacity, premium signage, additional side basin access to meet AS1428 requirements and the choice to have only 1, 2 or 3 tap/bubbler combinations.

CF400 SERIES

Wall and Floor Mounted Options

+ CF400 Standard Wall Mounted

FEATURES

- + Chiller Unit - 72 L/hour chilling capacity
- + Includes filter for improved water quality
- + Stainless Steel Modular Construction
- + 3 x Bottle Filler
- + 3 x Drinking Bubblers
- + 316 S/S Trough and Fixings
- + Easy Activated push buttons
- + Wall Mounted (height can vary to suit requirements)
- + 240V Electrical supply
- + Australian Made
- + Vandal resistant
- + Easy Installation

OPTIONS

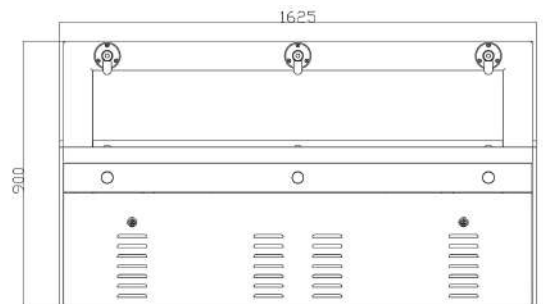
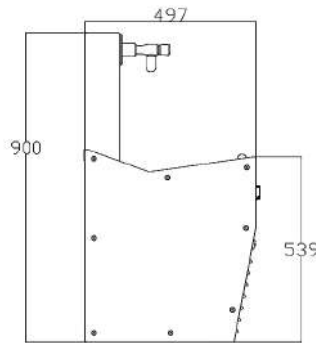
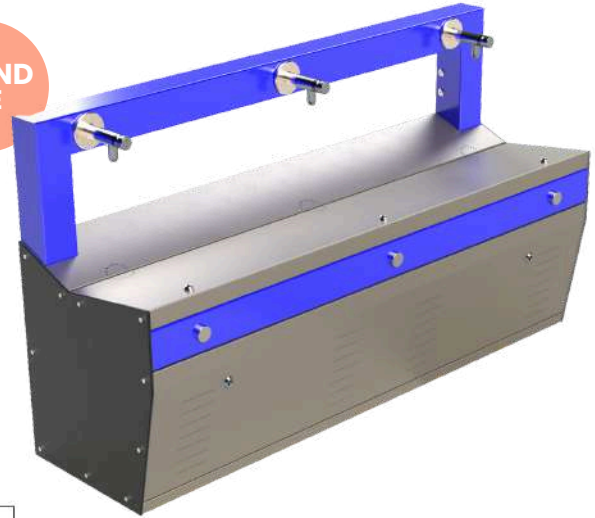
- + Over 100 Powder Coating options
- + Signage/Logo Panel
- + Non-Chilled option

DIMENSIONS

- + Total Height: 900mm
- + Width: 1625mm
- + Depth: 497mm

+ SKU DF_CF400

BRAND
ME



+ CF400 Standard Floor Mounted - Bubbler Height 715mm

FEATURES

- + Chiller Unit - 72 L/hour chilling capacity
- + Includes filter for improved water quality
- + Stainless Steel Modular Construction
- + 3 x Bottle Filler
- + 3 x Drinking Bubblers
- + 316 S/S Trough and Fixings
- + Easy Activated push buttons
- + Wall Mounted (height can vary to suit requirements)
- + 240V Electrical supply
- + Australian Made
- + Vandal resistant
- + Easy Installation
- + Signage or logo panel with branding

OPTIONS

- + Over 100 Powder Coating options
- + Signage/Logo Panel
- + Non-Chilled option

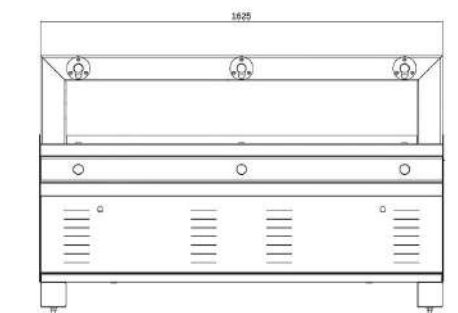
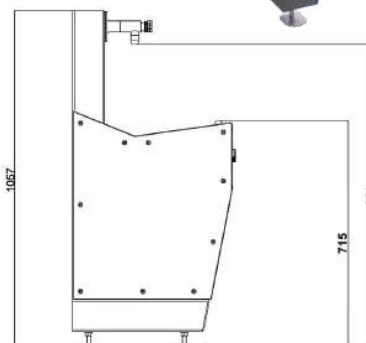
DIMENSIONS

- + Total Height: 900mm
- + Width: 1625mm
- + Depth: 497mm

+ SKU DF_CF400_SM

BRAND
ME

+ Ideal for
Juniors



CF400 SERIES

Wall and Floor Mounted Options

+ CF430 Standard Floor Mounted - Bubbler Height 907mm

FEATURES

- + 72 L/hour chilling capacity
- + Stainless Steel Modular Construction
- + 3 x Bottle Filler
- + 3 x Drinking Bubblers
- + 316 S/S Trough and Fixings
- + Easy Activated push buttons
- + Floor Mounted (approx. bubbler height at 907mm)
- + 240V Electrical supply
- + Australian Made
- + Vandal resistant
- + Easy Installation

OPTIONS

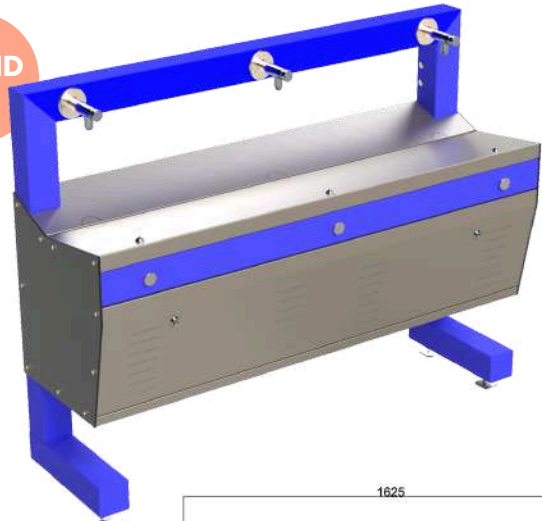
- + Over 100 Powder Coating options
- + Signage/Logo Panel
- + Non-Chilled option

DIMENSIONS

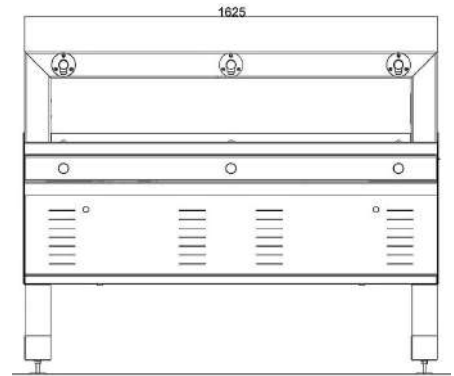
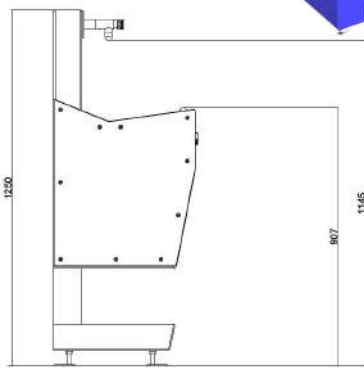
- + Total Height Approx: 1250mm
- + Width: 1625mm
- + Depth: 497mm

+ SKU DF_CF430

BRAND
ME



+ Ideal for
Seniors



+ CF420 Standard Wall Mounted Compact

FEATURES

- + 72 L/hour chilling capacity
- + Stainless Steel Modular Construction
- + 2 x Bottle Filler
- + 2 x Drinking Bubblers
- + 316 S/S Trough and Fixings
- + Easy Activated push buttons
- + Wall Mounted (height can vary to suit requirements)
- + 240V Electrical supply
- + Australian Made
- + Vandal resistant
- + Easy Installation

OPTIONS

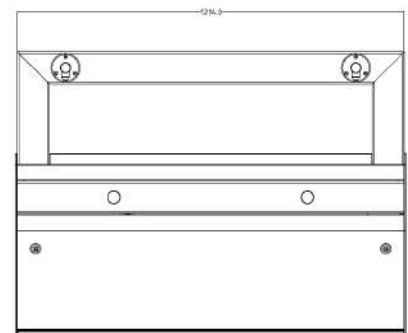
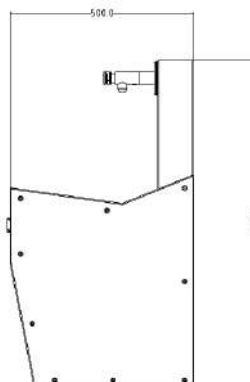
- + Over 100 Powder Coating options
- + Signage/Logo Panel
- + Non-Chilled option

DIMENSIONS

- + Total Height: 900mm
- + Width: 1214mm
- + Depth: 497mm

+ SKU DF_CF420

BRAND
ME



CF400 SERIES

Floor Mounted Compact Options

+ CF420 Standard Floor Mounted - Bubbler Height 907mm Compact

FEATURES

- + 72 L/hour chilling capacity
- + Stainless Steel Modular Construction
- + 2 x Bottle Filler
- + 2 x Drinking Bubblers
- + 316 S/S Trough and Fixings
- + Easy Activated push buttons
- + Floor Mounted (approx. bubbler height at 907mm)
- + 240V Electrical supply
- + Australian Made
- + Vandal resistant
- + Easy Installation

OPTIONS

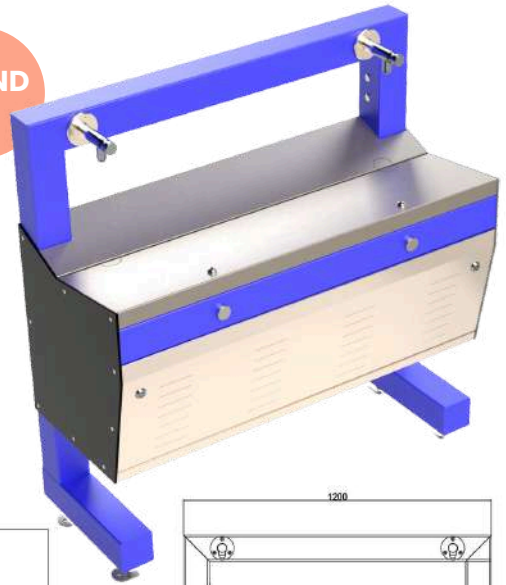
- + Over 100 Powder Coating options
- + Signage/Logo Panel
- + Non-Chilled option

DIMENSIONS

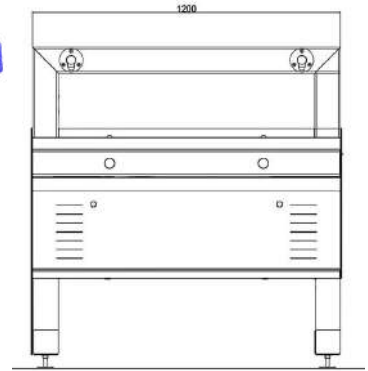
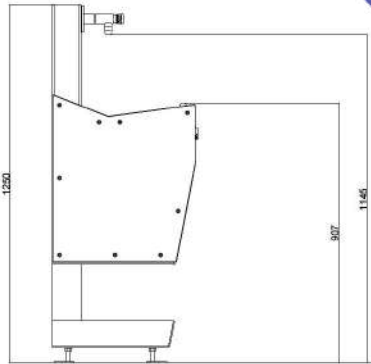
- + Total Height Approx: 1250mm
- + Width: 1214mm
- + Depth: 497mm

+ SKU DF_CF420_FM

BRAND
ME



+ Ideal for
Seniors



+ CF420 Standard Floor Mounted - Bubbler Height 715mm Compact

FEATURES

- + 72 L/hour chilling capacity
- + Stainless Steel Modular Construction
- + 2 x Bottle Filler
- + 2 x Drinking Bubblers
- + 316 S/S Trough and Fixings
- + Easy Activated push buttons
- + Floor Mounted (approx. bubbler height at 715mm)
- + 240V Electrical supply
- + Australian Made
- + Vandal resistant
- + Easy Installation

OPTIONS

- + Over 100 Powder Coating options
- + Signage/Logo Panel
- + Non-Chilled option

DIMENSIONS

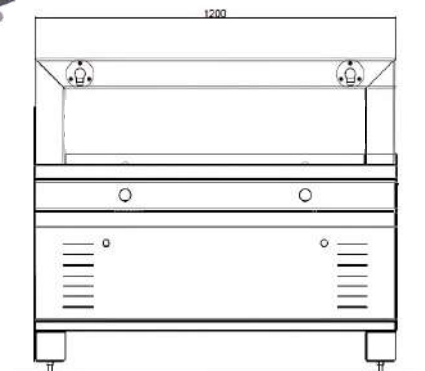
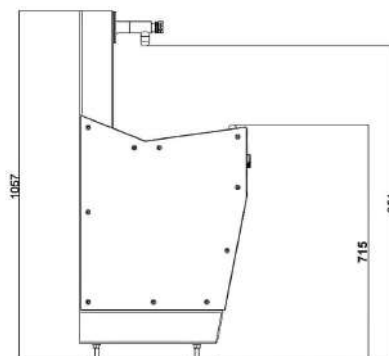
- + Total Height Approx: 1057mm
- + Width: 1200mm
- + Depth: 497mm

+ SKU DF_CF420_SM

BRAND
ME



+ Ideal for
Juniors



CF400 SERIES

Wall Mounted Compact

+ CF410 Standard Wall Mounted

FEATURES

- + Chilled Water Unit
- + Stainless Steel Modular Construction
- + 1 x Bottle Filler
- + 1 x Drinking Bubblers
- + 316 S/s Trough and Fixings
- + Easy Activated push buttons
- + Wall Mounted (height can vary to suit requirements)
- + 240V Electrical supply
- + Australian Made
- + Vandal resistant
- + Easy Installation

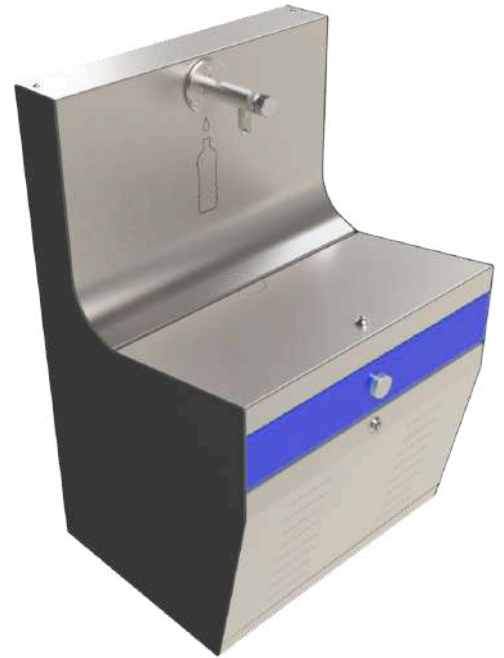
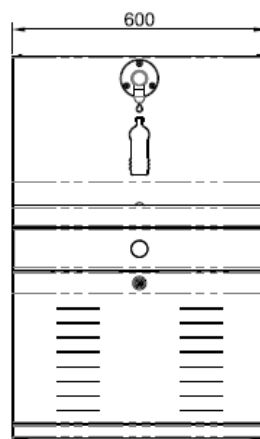
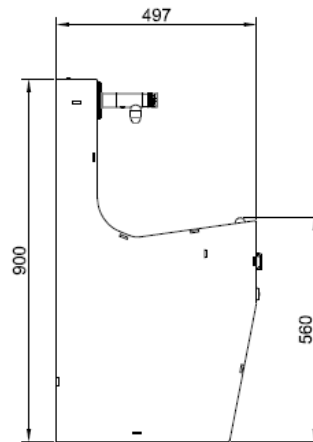
OPTIONS

- + Over 100 Powder Coating options
- + Powdercoated Side Panels
- + Non-Chilled option

DIMENSIONS

- + Total Height: 900mm
- + Width: 600mm
- + Depth: 497mm

+ SKU DF_CF410



CUSTOM COLOURS TO MATCH!

Urban + offers the full Dulux range, with around 100 colours available for the CF400. Both the body and front button plate can be customised separately, allowing schools to mix and match colours to align with their logo or branding.

Whether you're looking to match your school or club's colours or create a unique combination, we've got you covered!

POPULAR COLOURS



COAST



STORM



DESERT



FLAME



LEAF



EVERGREEN



MONUMENT



SILVER



MOONLIGHT



SUNSHINE



REEF

POPULAR CHOICES

Ideal for Junior Schools, Senior Schools
and Sports Clubs



NOT SURE WHAT TO CHOOSE?

Selecting the right drinking fountain and bottle filler for your school, club, or outdoor community space can be a surprisingly complex task. With so many styles, materials, and features to consider, it's crucial to focus on factors like durability, accessibility, and long-term use. Choosing a well-constructed fountain or bottle filler to not only withstands daily use and tough environmental conditions but also that considers all users, including children and individuals with disabilities.

At Urban, we've spent the past 20 years helping clients navigate this selection process. Our expert team understands that choosing the perfect drinking fountain or bottle filler involves more than just picking a model off the shelf—it requires a comprehensive approach. From assessing the space and identifying specific needs, to addressing local regulations and providing end-to-end support, we're here to simplify every step. We also offer ongoing assistance after purchase, ensuring your water solutions remain reliable and accessible.

With our extensive experience and personalised service, we'll make certain you get exactly what you need—and that the final result is a safe, durable, sustainable hydration solution for everyone.

HYDRATION SOLUTIONS FOR SCHOOLS & CLUBS

Floor Mounted

+ A280 Standard Floor Mounted

FEATURES

- + Bottle refill and bubbler as standard
- + Disabled accessible
- + Heavy duty steel construction
- + Welded not bolted
- + 316 S/S basin and fixings
- + Sand resistant activator button
- + Australian made
- + Vandal resistant
- + Watermark Certified
- + Concealed fixings

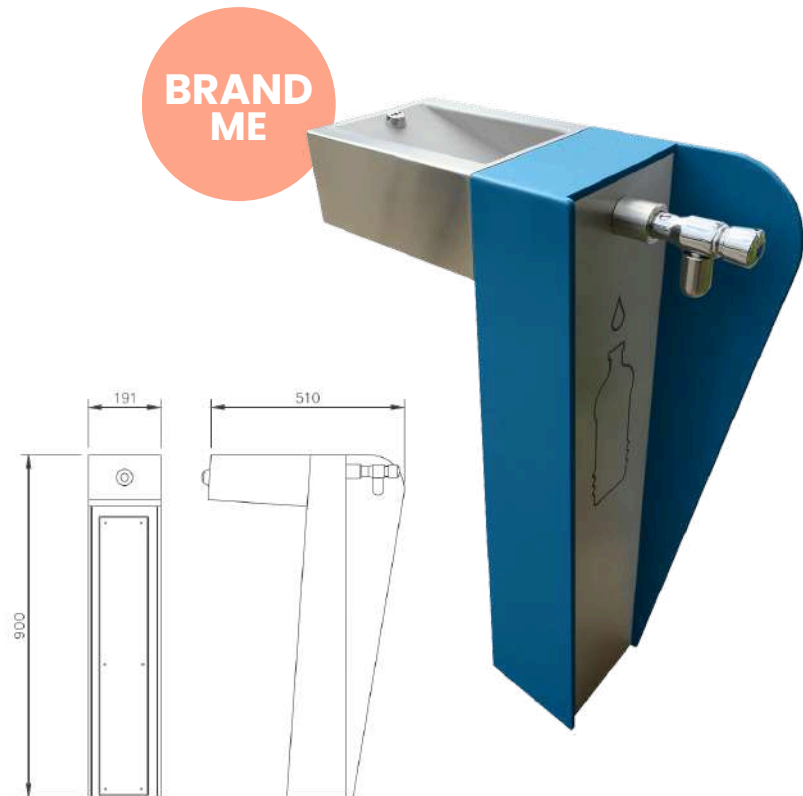
OPTIONS

- + Tap and Dog Bowl
- + Catchment Tray
- + Maintenance Tap
- + Full Stainless Steel body
- + Water Filter
- + Longer basin/reduced height for AS1428 compliance
- + Artwork – logo/plaque/vinyl wrap
- + Side Protection Panels
- + Inground Fixing Cage
- + Anti Graffiti Coating
- + Over 100 Powder Coating options.

DIMENSIONS

- + Total Height: 900mm
- + Clearance Height: 800mm
- + Base: 191mm x 160mm

+ SKU: DF_A280



+ BF400P Water Bottle Refill Station

FEATURES

- + Strong and durable galvanised steel construction
- + Recycled plastic post made in collaboration with Replas
- + Sustainable Circular Economy design
- + Modular design for flexibility/retrofit
- + Easy Push Activator (self-returning)
- + Vandal Resistant
- + Concealed Fixings
- + Australian Made

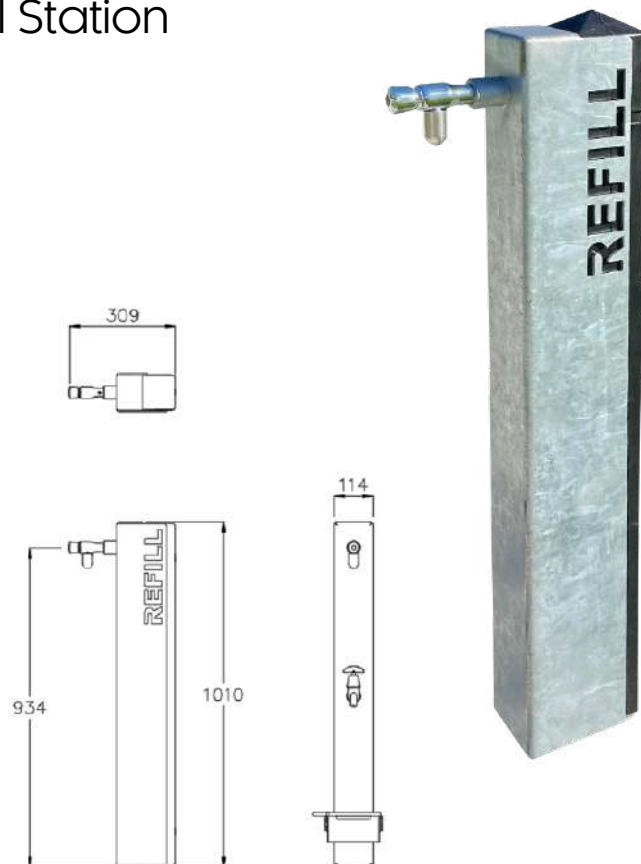
OPTIONS

- + Tap and Dog Bowl
- + Maintenance Tap
- + Tap Shrouds
- + Carbon Filter
- + Stainless Steel
- + Wheelchair Accessible Bubbler (AS1428.1 compliant)
- + Artwork – Logo/Laser etching
- + Powder Coated colours also available
- See the Dulux Colour Guide

DIMENSIONS

- + Total Height: 1010mm
- + Width: 114mm
- + Depth: 309mm

+ SKU: DF_BF400P



HYDRATION SOLUTIONS FOR SCHOOLS & CLUBS

Wall Mounted

+ BF200 Wall Mounted

FEATURES

- + Heavy Duty 8 mm Steel Construction
- + Fully Welded Not Bolted
- + 316 S/S Fixings
- + Australian Made
- + Vandal Resistant
- + WaterMark Certified

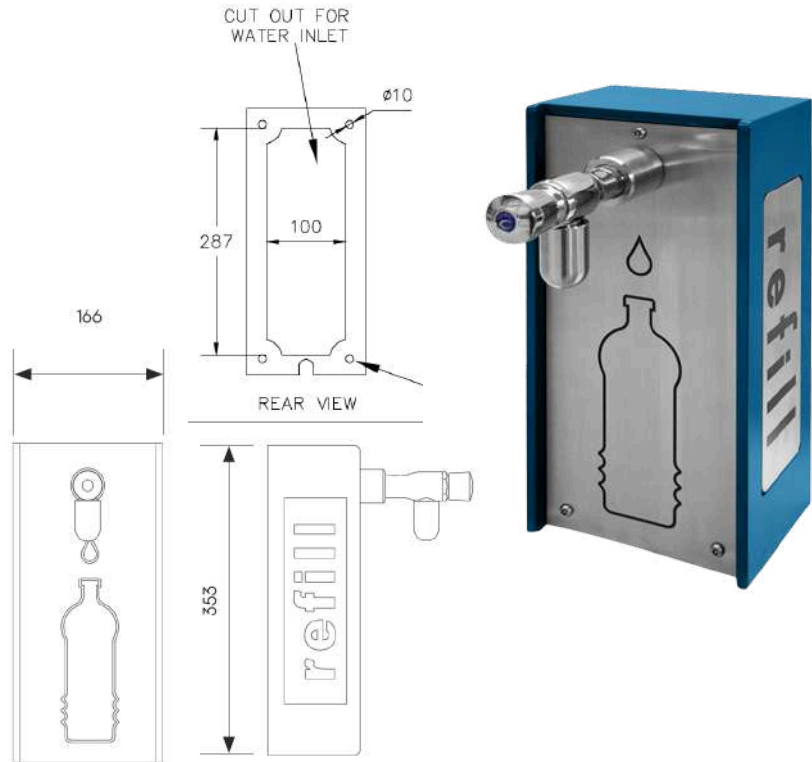
OPTIONS

- + Catchment Tray
- + Carbon Filter
- + Anti Graffiti Coating
- + Shorter version
- + Artwork – Logo/Plaque/Vinyl wrap

DIMENSIONS

- + Total Height: 353mm
- + Width: 166mm

+ SKU DF_BF200W



+ BF200 Wall Mounted With Catchment Tray

FEATURES

- + Heavy Duty 8 mm Steel Construction
- + Fully Welded Not Bolted
- + 316 S/S Fixings
- + Australian Made
- + Vandal Resistant
- + WaterMark Certified

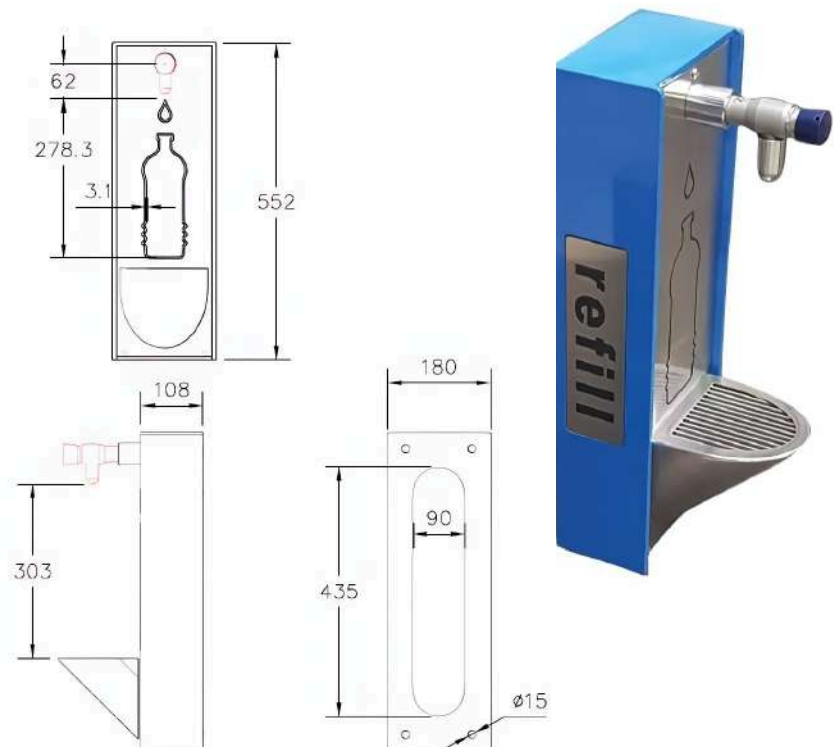
OPTIONS

- + Carbon Filter
- + Anti Graffiti Coating
- + Shorter version
- + Artwork – Logo/Plaque/Vinyl wrap

DIMENSIONS

- + Total Height: 552mm
- + Width: 180mm

+ SKU DF_BF200WC



URBAN FOUNTAINS & FURNITURE

Making Life Better

DO YOU NEED TO BUY NEW?

+ AS PART OF OUR COMMITMENT TO CUSTOMERS, URBAN+ ALWAYS ASKS, DO YOU NEED TO BUY NEW?

Most schools still have reasonable, functioning hardware that can still be used when upgrading their facilities. It is often more cost effective, time efficient and environmentally friendly to retrofit existing units with upgraded hardware than to throw them in to the waste and start anew. Urban+ is able to offer a complete range of solutions from retrofitting existing hardware, improving and upgrading facilities, to offering a new purpose designed solution for your school.



Need more bottle fillers?

Utilising existing troughs with bubblers only, Urban can install a bottle filler strip to add instant refill solutions utilising the existing plumbing and drainage.

Solution 1

Need chilled water?

Utilising existing troughs and bubblers, Urban can install a chiller unit to chill existing water bubblers. Why not add some bottle refill strips at the same time to maximise the use of your chiller, while still utilising existing plumbing and drainage and minimising the civil works..

Solution 2

Need vandal resistant tapware?

If you have a small existing chilled unit that has a broken goose neck bottle filler. Urban can add a strong, single tap bottle filler using your existing chiller unit to keep it working for years to come.

Solution 3



HYDRATION SOLUTIONS FOR SCHOOLS & CLUBS

Wall Mounted Multi - Strips

+ BF200 Wall Mounted Bottle Refill Single Tap

FEATURES

The BF200WM wall-mounted single-tap bottle refill unit offers a cost-effective upgrade by installing above existing water bubblers.

It's an ideal solution for replacing broken gooseneck bottle fillers, keeping your chilled unit functional for years to come.

- + push and fill functionality
- + spring loaded auto shutoff
- + designed to reduce water waste
- + ideal for placement above existing bubbler systems
- + made from high quality stainless steel
- + vandal resistant

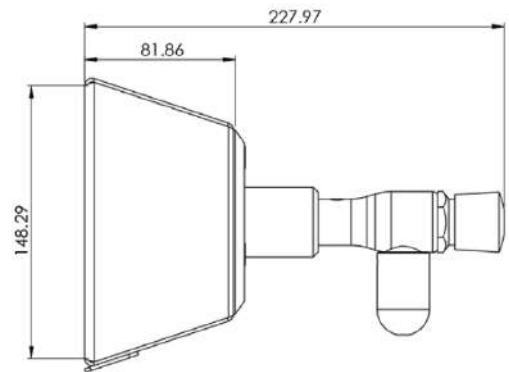
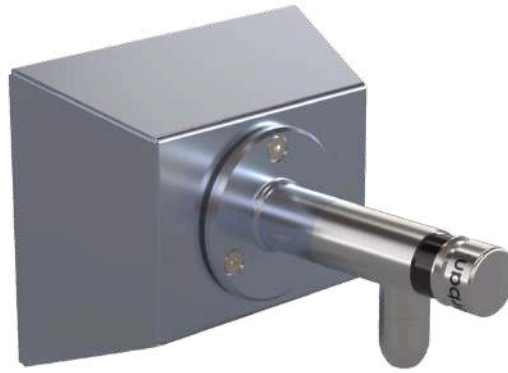
OPTIONS

- + "Refill" Plaque
- + Artwork - Logo/Laser etching
- + Optional chiller unit

DIMENSIONS

- + Total Height: 155mm

+ SKU: DF_BF200WMS



+ BF200WM Wall Mounted Bottle Refill Multi Strip

FEATURES

Our BF200WM refill strips can be retrofitted to existing drinking troughs to offer a safe and hygienic alternative to standard bubblers.

- + push and fill functionality
- + spring loaded auto shutoff
- + designed to reduce water waste
- + ideal for placement above existing bubbler systems
- + made from high quality stainless steel
- + vandal resistant

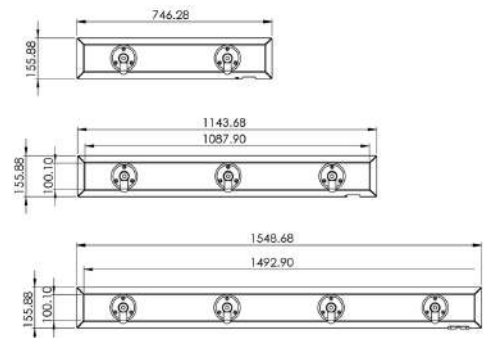
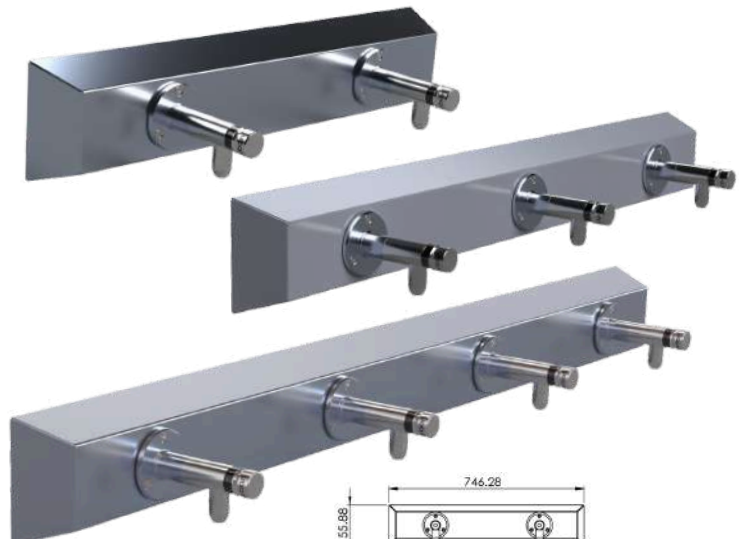
OPTIONS

- + Available in 2, 3 or 4 Tap Refill Strip
- + "Refill" Plaque
- + Artwork - Logo/Laser etching
- + Optional chiller unit

DIMENSIONS

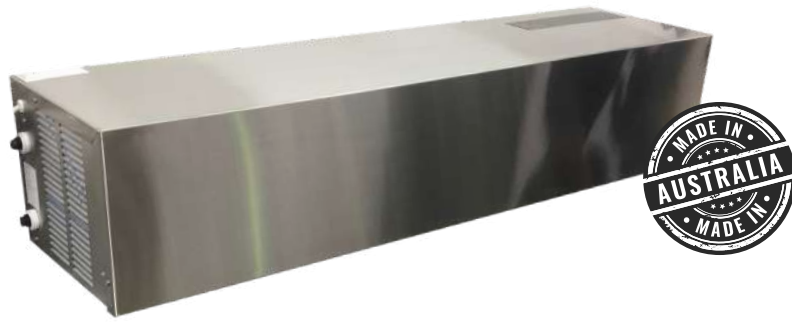
- + Total Height: 155mm
- + Width: 746mm (2 Tap),
1143mm (3 Tap),
1548mm (4 Tap)

+ SKU: DF_BF200WM2
SKU: DF_BF200WM3
SKU: DF_BF200WM4



CF400 SERIES

Meet Our Chiller Unit

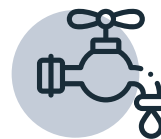
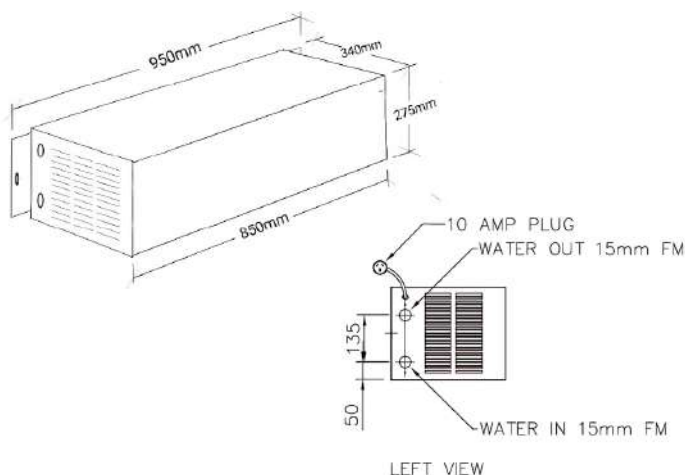


Refrigerated Water Chiller to suit a 3 tap school drinking trough

These refrigerated water coolers are designed to be installed underneath a school drinking trough. It can be installed along with a new drinking trough or can be fitted underneath an existing drinking trough thus saving on the cost purchasing new troughs, faucets and plumbing installation.

Description and Features

- + This is a wall mounted refrigerated water chiller.
- + It must be mounted horizontally.
- + Must not be installed inside a cupboard or an enclosed space.
- + This water cooler is fitted with a low ambient temperature control to help prevent the refrigeration system from running in cooler weather (21 degrees C or below) and extending the life of the refrigeration system. *Children don't need to be drinking cold water when the outside temperature is below 21 degrees C.*
- + All the electrical wiring is double insulated.
- + All water lines and fittings are insulated to prevent condensation.
- + Has a 10amp power plug top.
- + Will produce approximately 72 litres of cold water per hour.
- + Water fittings 15mm female thread (water in and water out).
- + Maximum working water pressure 700kpa.



Water Supply
Mains Water Supply



Dimensions (mm)
Cabinet 850W, with Mounting bracket 950W x 340D x 280H (Boxed Measurements 1010W x 370D x 310H)



Weight
38kgs (Boxed Weight 40kgs)



Cooling System
R134a refrigerant, compressor



Colour
Stainless Steel Cabinet



Power Supply
220/240volt, 50hz, 1ph, 2.6 amps, 395 watts, IP33

URBAN FOUNTAINS & FURNITURE

Making Life Better

VANDALISM PROTECTION & WARRANTY

Urban + has been designing and manufacturing drinking fountains for over 20 years, specialising in durable solutions built to withstand all weather conditions and high-traffic environments. With extensive experience in creating fountains for vandal-prone areas, we design our products to be robust and resilient. While no design can completely prevent damage from determined vandals, our high-strength construction significantly reduces the risk of serious or lasting harm.

Key Features to Prevent Vandalism:

+ Material Thickness: We use the thickest materials possible while maintaining aesthetic appeal to ensure robustness.

+ Secure Tapware: All custom-designed tapware is secured with additional mounting collars, which are fully fillet-welded internally to resist any attempts at forced removal. For added durability, reinforced stainless steel bars are incorporated to prevent intentional damage and breakage, ensuring long-lasting performance.

+ Hidden Fixings: We minimise visible external screws, with most fixings concealed internally for a cleaner, more secure design. Any necessary external fixings are equipped with security screws to deter unauthorised tampering.

Warranty

All our fountains are proudly designed and manufactured in Australia, showcasing our commitment to quality craftsmanship and exceptional customer service. We offer comprehensive support, including assistance with installation inquiries, after-sales service, and replacement parts if needed.

Built for long-term durability, each unit undergoes rigorous quality control and water testing before dispatch. Most plumbing fittings are standard and readily available at plumbing stores, while Urban Valves and bottle fillers can be sourced directly from our factory.

We stand by our products with a standard 2-year warranty on all manufactured and plumbing components, and our fountains are designed to last over 15 years with proper care and maintenance.

ABOUT URBAN+ FOUNTAINS & FURNITURE

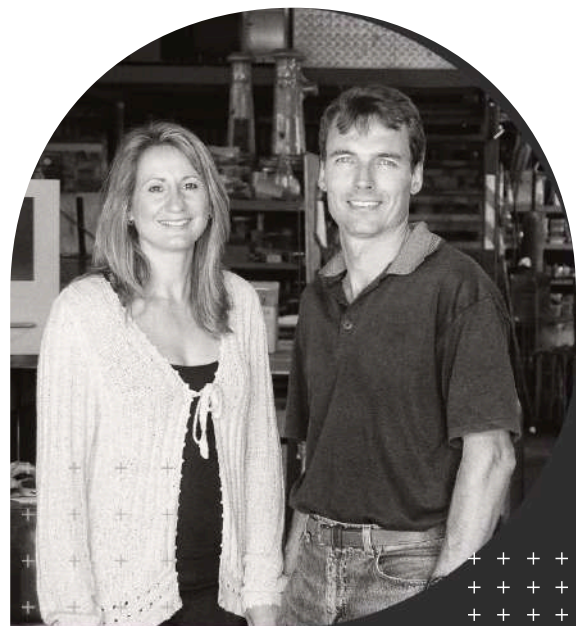
+ COMPANY HISTORY

+ Urban was founded in 2001 by husband-and-wife team Gary and Claire Allan, who recognised an opportunity to create durable and timeless street and park furniture.

+ Urban+ operated for 18 years on respect, reputation, and strong working relationships.

+ In 2019 Simon Higgins was brought on as a business partner and helped define Urban+'s purpose to support the shift to a circular economy.

+ Urban+ now integrates circular thinking into every aspect of its business and manufacturing processes, driving the shift towards a truly sustainable Australian manufacturing industry.



URBAN FOUNTAINS & FURNITURE

Making Life Better

WHAT IS THE CIRCULAR ECONOMY?

+ THE CIRCULAR ECONOMY EXPLAINED

The concept of a Circular Economy gained traction in the 1970s, describing a system that minimises waste and pollution while keeping materials in use for as long as possible.

This approach stands in sharp contrast to the traditional "linear" or "take-make-waste" model, which depletes natural resources and harms ecosystems worldwide.

At Urban+, we combine exceptional design with sustainability. Our commitment to a circular economy ensures our products are visually striking, durable, and eco- friendly. By emphasising craftsmanship, we create innovative solutions that enhance public spaces and minimise waste for a sustainable future.



SCHOOLS WHO HAVE TRUSTED URBAN + HYDRATION SOLUTIONS.



LINDISFARNE
Anglican Grammar School



St John Vianney's Primary School
Manly



CONTACT URBAN+

Please Note: The products featured in this brochure represent only a part of our extensive range. To explore our full collection of drinking fountains, bottle refill stations, and outdoor furniture solutions, please visit our website by scanning the QR code.



(07) 3382 7372



office@urbanff.com.au



5 Telford Circuit, Yatala, QLD



www.schools.urbanff.com.au



"The circular economy isn't about one manufacturer changing one product, it is about all of the interconnected companies and governments that form our infrastructure and economy coming together... it's about rethinking the operating system itself."

Ellen MacArthur



urban +
for schools