

CARE AND MAINTENANCE

1. Regular washing down of the exterior surface will help prolong the lustre of the painted finish.
2. Painted fountains that become dull due to prolonged exposure to direct sunlight can be restored with an appropriate surface polish.
3. To maintain the exterior of the fountain carefully remove any loose surface deposits with a wet sponge. Use a soft (non abrasive) brush and dilute a solution of mild detergent (eg. PH-neutral liquid hand washing detergent in warm water (DO NOT use solvents) to remove dust, salt and other deposits. Rinse thoroughly with clean fresh water to remove residues. To remove any Tea Staining on Stainless Steel surfaces we recommend Drifter Hull cleaner and stain remover.
4. Do not use any solvents on the surface as this will adversely affect the longevity of the painted finish.
5. Surface scratches and inconsistencies can be touched up using Dulux touch up paint. Most colours can be matched.
6. We recommend the use of anti-seize paste on all external fixing bolts to maintain ease of access over long periods of time.
7. Check the fountain internal connections, water flow and all external access screws and fixing bolts regularly (every 3mths) to ensure they are tight.
8. In high debris areas (parks, children's playgrounds etc) where there may be sand or bark or a lot of leaf litter that may be placed in to the basin, check regularly and remove debris to prevent blocking of the basin or the waste outlet pipe.
9. After any interruption to the water supply, always flush the lines prior to reconnection to the fountain to prevent debris entering the valve.

WARRANTY

All Urban Fountains and Furniture outdoor drinking fountains are covered by a 2 year manufacturers guarantee against faulty materials and workmanship under normal wear and tear conditions.

All fountains are date stamped at the time of despatch.

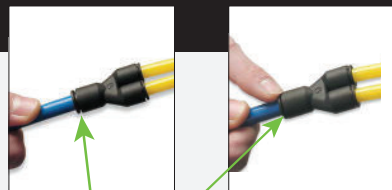
This warranty will only apply under the following conditions:

- The fountain was installed in accordance with our installation instructions that are supplied with every fountain.
- The fountain was installed by a licensed plumber
- The water lines have been thoroughly flushed prior to connection to the fountain
- The fountain has not been tampered with or repaired in any way without obtaining prior approval from our factory specialists first.
- The fountain has been serviced and maintained as per our supplied instructions.

ATTENTION PLUMBERS

This fountain uses "Push In Fittings". Failure to release these fittings correctly will result in leakage.

These quick release fittings allow instant connection and disconnection without the use of spanners.



Push outer ring in to release tube from fitting

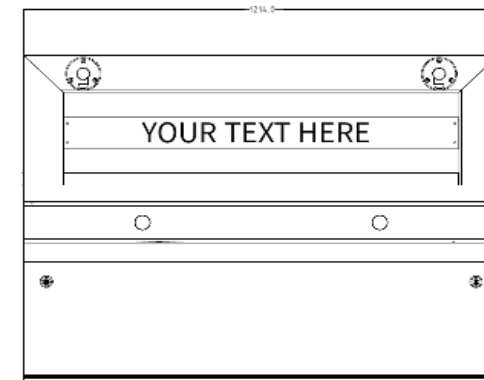
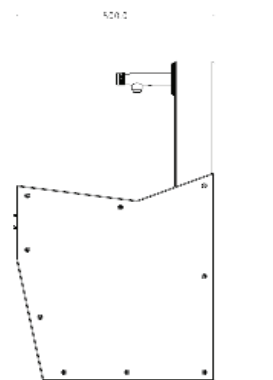
urban + Fountains Furniture

Drinking Fountains

Models: CF420

urban + Fountains Furniture

INSTALLATION, OPERATION AND MAINTENANCE INSTRUCTIONS



SPECIFICATIONS

- 1/2" bsb water inlet (15mm)
- 40mm waste outlet
- Maximum Temperature: 40°C
- Maximum Water Pressure: 500 kpa
- Complies with WMTS-105 Technical Specification: Appliances - Beverage dispensers and icemakers
- Complies with AS/NZS 4020 Testing of products in contact with drinking water

2 year
warranty



WaterMark

WM-080042
WMTS-105

CUSTOMER SERVICE



07 3382 7372



office@urbanff.com.au



07 3287 5598



www.urbanff.com.au



INSTALLATION








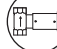








STOP! Please read all supplied information before installation.

1. All UrbanFF Fountains must be installed by a qualified plumber and Qualified Electrician in accordance with National plumbing and drainage code AS/NZS 3500.1 and AS/NZS 3500.2 and Electrical AS3000 Regulations and any other local authority codes.
2. Floor or wall mounted option. If floor mounted Install on level ground if possible. For wall mounted
- IMPORTANT – Wall is to be assessed by structural engineer prior to installation to ensure load bearing is possible.
3. 240V single phase power is required along with mains water supply and waste outlet drainage.
4. Before Installation FLUSH ALL EXTERNAL LINES before connecting to fountain.
5. PLEASE NOTE: No Trap is supplied inside the fountain. Trap to be fitted externally by plumber.
6. Remove the fountain from the packaging preventing scratching and damage to the body of unit
7. Installation under shade preferable.
8. Please refer to provided installation drawings below for unit mounting details.
9. To access the 2 upper rear bolts for wall mounting, first remove the Right Side plastic panel.
10. Remove the main trough which will give access to the 2 upper rear bolts.
See Detail A for fixing. Follow detailed drawings attached for wall installation and fixing.
11. Connect the 40mm waste outlet pipe to the waste water connection.
12. If you have not flushed the external water inlet pipes – do it now! Flushing the water inlet pipes from the mains supply before connecting to fountain will help prevent blockage by any debris that may be in the external pipes.
13. Connect water supply to ½" BSP inlet.
14. Test the bubbler and bottle filler by activating the button.
15. Incorrect installation will affect fountain performance. Urban Fountains and Furniture will not be responsible for defects that arise from incorrect installation.
16. All fountains have been checked for leaks as part of our quality assurance program and some droplets of water may be evident inside the packaging and/or unit. This is perfectly normal.
17. Refer to trouble shooting guide if you experience any problems or call UrbanFF 07 33827372
18. Check all connections and waste piping to ensure they are tight and secure

TROUBLESHOOTING

There is restricted or no water flow?	Check the inlet lines for kinks in the tubing. Ensure the water supply valve is fully open. Check the water pressure regulator is open.
The water continues to drip / run after shutting off?	The most common cause of water not shutting off is a leaking valve and is due to the lines not being flushed adequately and debris getting in to the valve through the inlet and sitting on the rubber seals. To check the valve it will need to be removed. Please contact this office for details instructions to ensure this is done correctly.
The water flow is shooting over the top of the basin or is not high enough and trickling over the nozzle?	The water pressure is too high / low and needs to be adjusted via the water flow regulator so it flows in to the catchment area of the basin.
Leaking from the internal connections?	Check that they have been installed correctly. (all fountains are leak tested prior to leaving the factory). Have the push in fittings been pulled? (see instructions on how to connect and disconnect push in fittings). Is the water inlet connection tight?

SPARE PARTS

 Y fitting	reorder code: 15-JG8-YPIECE	 Self Returning Tap	reorder code: 15-TAP-BUB208C
 1/4 x 90° LF-Fitting	reorder code: 15-LEG8M-ELB-8X1-4	 Maintenance Tap	reorder code: 15-TAP-VP350
 1/4 x 90° Fitting	reorder code: 15-JG8-ELB-1-4X90	 Bottle Filler	reorder code: 15-BUB-TD90P
 3/8 x 90° Fitting	reorder code: 15-JG8-ELB-3-8X90	 Push Button Valve	reorder code: 15-VAL-ENW00415
 1/4 Straight	reorder code: 15-JG8-STR-1-4	 Water Regulator	reorder code: 15-REG-G14
 3/8 Straight	reorder code: 15-JG8-STR-3-8	 Mini Ball Valve	reorder code: 15-VAL-15MINBAL
 1/2 x 90° Fitting	reorder code: 15-JG12-ELB-1-2X90	 Stop tap BUB268	reorder code: 15-VAL-ENW00120
 Blue Hose	reorder code: 15-HOS-BL8	 Bubbler	reorder code: 15-BUB-TD90P

GENERAL NOTES

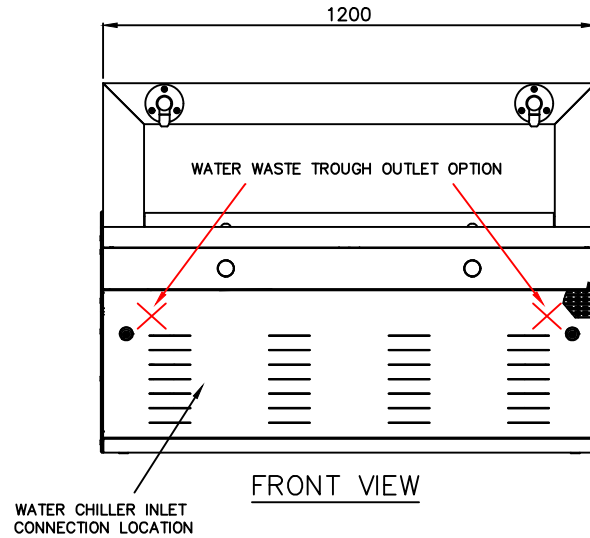
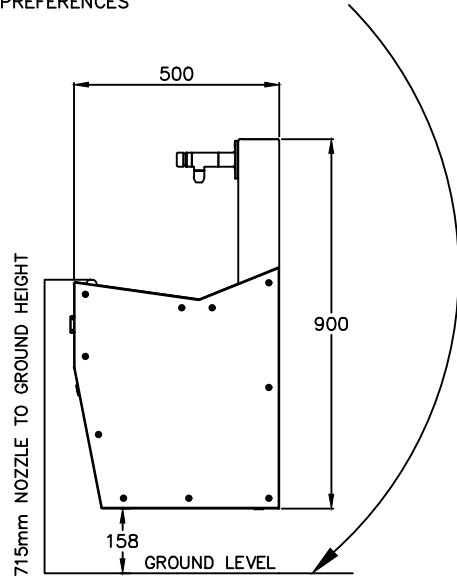
A GROUND HEIGHT TO THE UNDERSIDE OF THE UNIT OF 158mm ACHIEVES A BUBBLE HEIGHT OF APPROX 715mm (JUNIOR)

(SENIOR) HEIGHT IS APPROX 760mm BUT THIS CAN VARY DUE TO EXISTING WATER/ELECTRICAL INFRASTRUCTURE OR CUSTOMER PREFERENCES

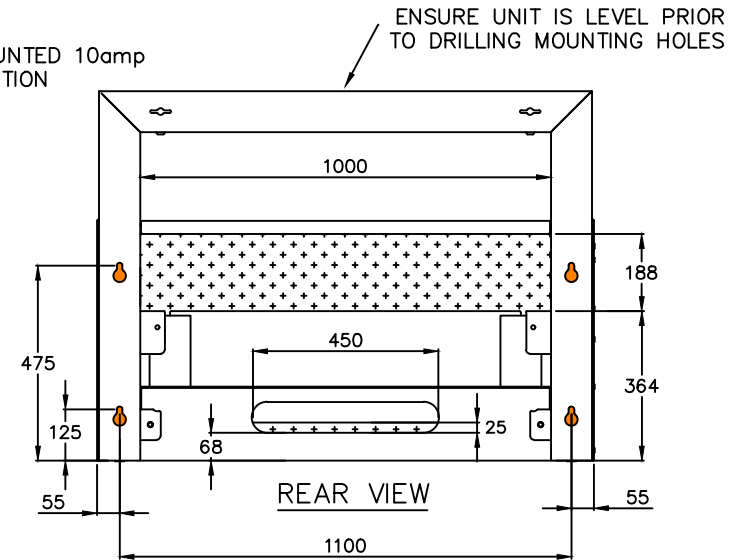
CF420 WALL MOUNT

PLUMBING & ELECTRICAL WORK TO BE DONE BY LICENSED TRADESMAN ONLY

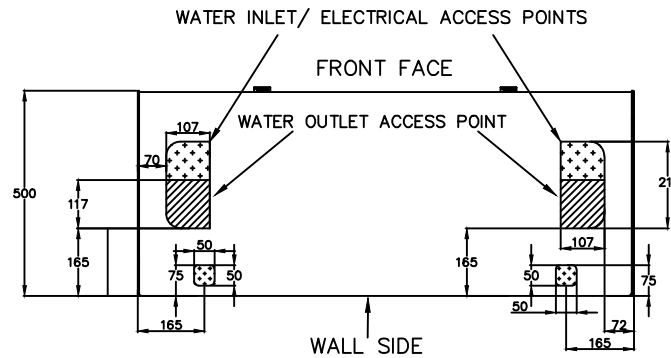
WATER INLET LINE TO BE FLUSHED BEFORE CONNECTION TO THE CHILLER




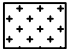

FRONT VIEW



REAR VIEW



UNDERSIDE VIEW

-  WATER OUTLET ACCESS
-  WATER INLET & ELECTRICAL ACCESS OPTION
-  M12 DYNO BOLT/CHEMSET 12Ø ALL THREAD MOUNT POINTS

urban +

URBAN FOUNTAINS AND FURNITURE PTY LTD.
5 TELFORD CIRCUIT
YATALA, QUEENSLAND 4207
PH: (07) 3382 7372
FX: (07) 3287 5598
WWW.URBANFF.COM.AU

COPYRIGHT DISCLAIMER
THIS DRAWING, AND ALL THE INFORMATION ILLUSTRATED HEREIN ARE SUBJECT TO COPYRIGHT. THIS DRAWING MAY NOT BE COPIED IN PART OR WHOLE, WITHOUT PRIOR WRITTEN CONSENT FROM URBAN FOUNTAINS AND FURNITURE PTY LTD.

DO NOT SCALE DWG, IF IN DOUBT, ASK!

UNITS OF MEASURE
ALL DIMENSIONS ARE IN MILLIMETERS U.O.N

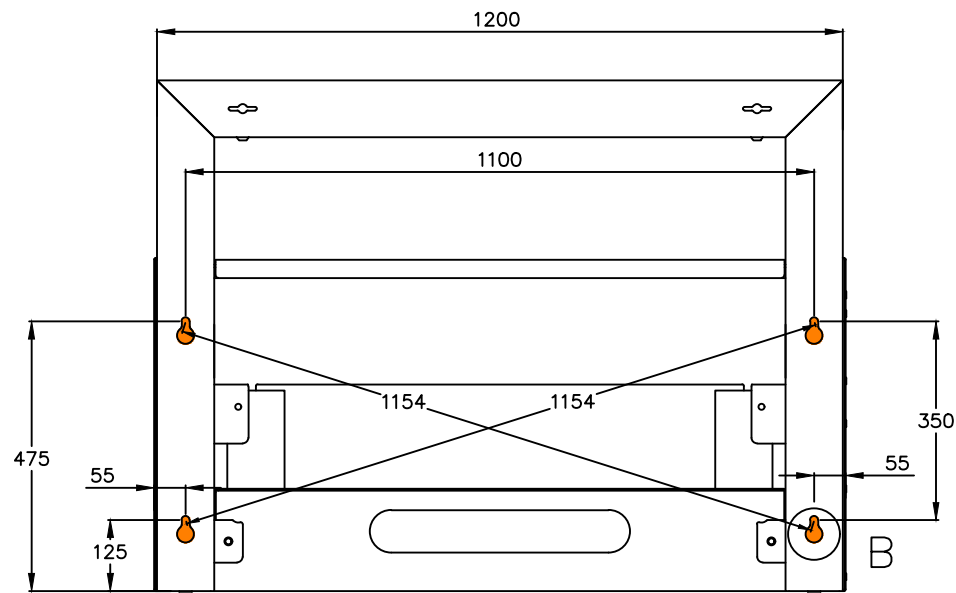
DRAWN BY: NFERGUSON DATE: 27/03/2025
SCALE: 1:10 SHEETS: 1 OF 3

DRAWING TITLE
CF420 WALL MOUNTING DETAILS

DRAWING NUMBER: CF420-WMD REVISION: 00

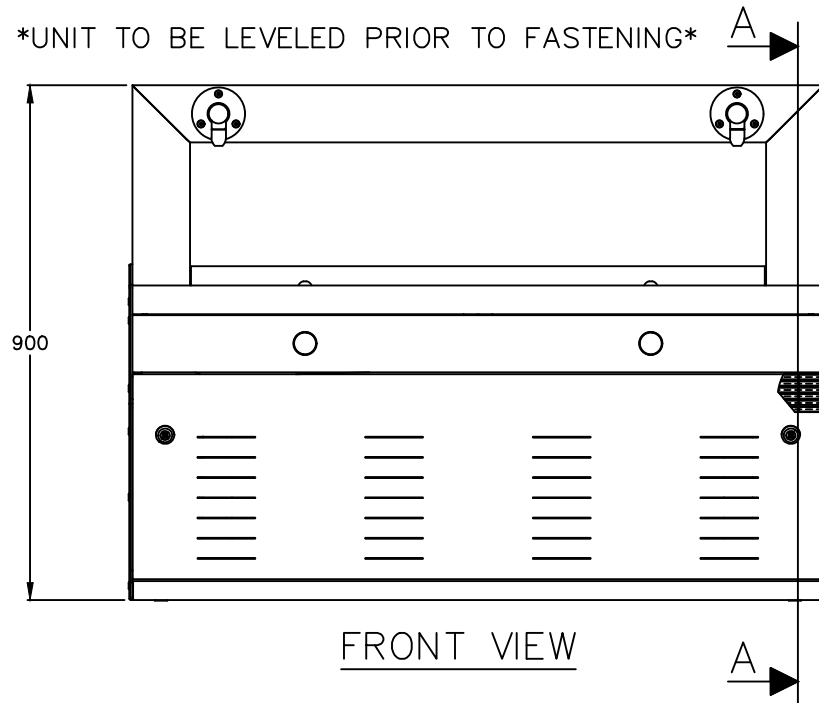
MATERIAL	FINISH

REVISION	DESCRIPTION	DRAWN BY	DATE
00	ISSUED FOR INFORMATION	GALLAN	16.8.2023

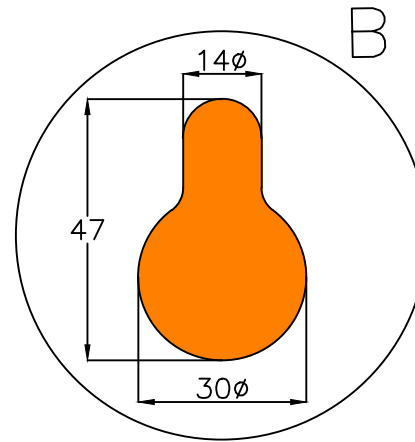


REAR VIEW

UNIT TO BE LEVELED PRIOR TO FASTENING

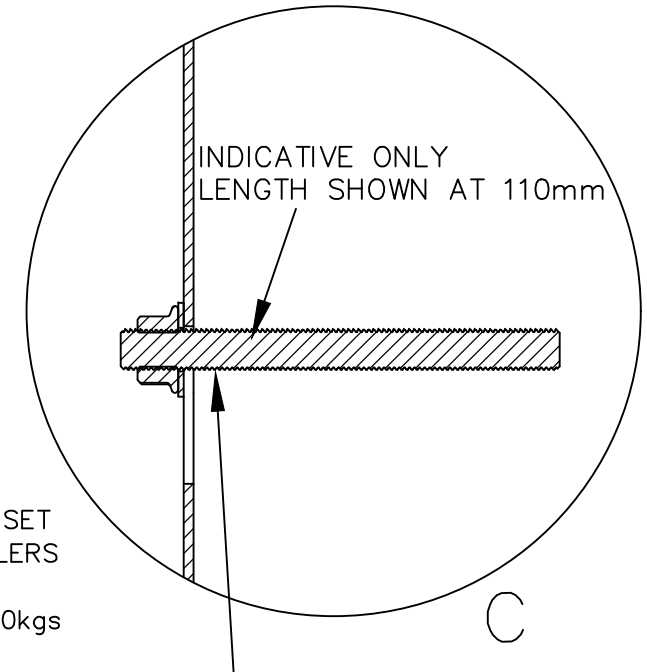


FRONT VIEW



KEY HOLE SLOT DETAIL

4 X KEY SLOT MOUNTING POINTS
TO ALLOW FOR M12 DYNO BOLTS
OR M12 HT ALL THREADS TO BE CHEMSET
IN PLACE. TO BE SUPPLIED BY INSTALLERS
ENSURE MOUNTING WALL IS SUITABLE
FOR INSTALLATION. APPROX WEIGHT 120kgs

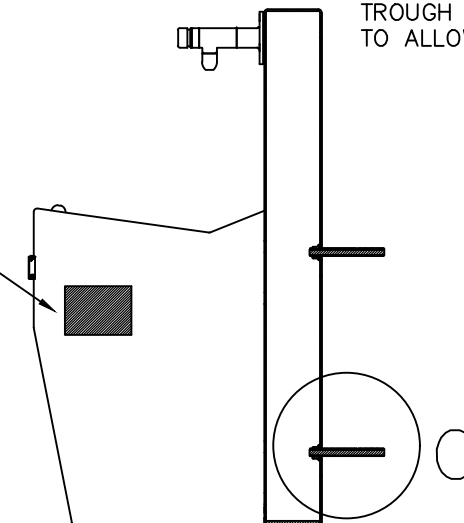


INDICATIVE ONLY
LENGTH SHOWN AT 110mm

TROUGH REMOVAL IS REQUIRED
TO ALLOW ACCESS TO FASTENER POINTS

INTERNALLY MOUNTED 10amp
GPO BOX LOCATION

POWER TO BE SUPPLIED VIA ACCESS
FROM THE BACK OR UNDERSIDE
BY AUTHORISED PERSONS ONLY



SECTION A-A

urban+

URBAN FOUNTAINS AND FURNITURE PTY LTD.
5 TELFORD CIRCUIT
YATALA, QUEENSLAND 4207
PH: (07) 3382 7372
FX: (07) 3287 5598
WWW.URBANFF.COM.AU

COPYRIGHT DISCLAIMER
THIS DRAWING, AND ALL THE INFORMATION ILLUSTRATED
HEREIN ARE SUBJECT TO COPYRIGHT. THIS DRAWING MAY
NOT BE COPIED IN PART OR WHOLE, WITHOUT PRIOR
WRITTEN CONSENT FROM URBAN FOUNTAINS AND FURNITURE
PTY LTD.

DO NOT SCALE DWG, IF IN DOUBT, ASK!

UNITS OF MEASURE
ALL DIMENSIONS ARE IN MILLIMETERS U.O.N. MM

DRAWN BY N.FERGUSON DATE 27/03/2025
SCALE 1:10 SHEETS 3 OF 3

DRAWING TITLE
CF420 WALL MOUNTING DETAILS

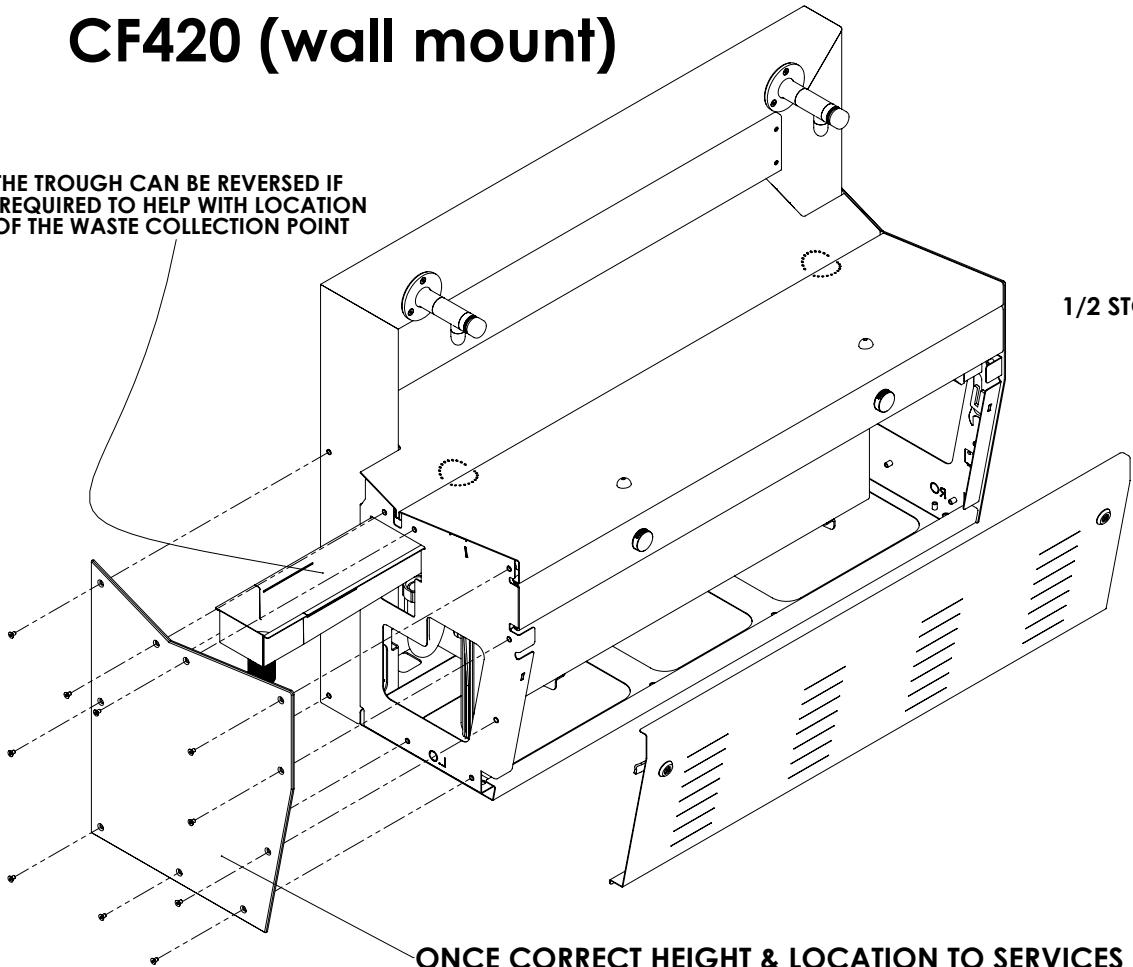
DRAWING NUMBER CF 420-WMD REVISION 00

MATERIAL	FINISH

REVISION	DESCRIPTION	DRAWN BY	DATE
00	ISSUED FOR INFORMATION	GALLAN	16.8.2023

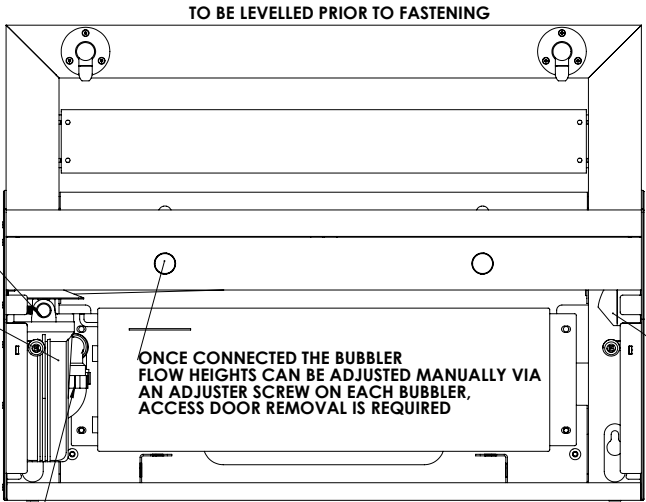
CF420 (wall mount)

THE TROUGH CAN BE REVERSED IF REQUIRED TO HELP WITH LOCATION OF THE WASTE COLLECTION POINT



1/2 MALE WATER INLET CONNECTOR LOCATION
WATER SUPPLY TO BE VIA THE BACK OR UNDERSIDE

1/2 STOP COCK



TO BE LEVELLED PRIOR TO FASTENING

ONCE CONNECTED THE BUBBLER
FLOW HEIGHTS CAN BE ADJUSTED MANUALLY VIA
AN ADJUSTER SCREW ON EACH BUBBLER,
ACCESS DOOR REMOVAL IS REQUIRED

10amp GPO LOCATION

40mm S & P TRAP
THIS WILL LOCATE TO THE OTHER SIDE
IF THE TROUGH IS SWITCHED AROUND
FOR BETTER PLACED

ONCE CORRECT HEIGHT & LOCATION TO SERVICES (WATER INLET/ OUTLET & ELECTRICAL)
IS ESTABLISHED
REMOVE THE ACCESS DOOR AS WELL AS ALL M6 CSK SCREWS ON THE LHS
PANEL USING A 4mm ALLEN KEY
UNDO THE S & P TRAP THEN REMOVE DRAINAGE TROUGH OUT THE LHS
THIS ALLOWS ACCESS TO THE WALL MOUNTING HOLES IN THE FRAME TO ALLOW
FOR MARKING (*IMPORTANT*) & SECURING DOWN ETC ONCE THE CORRECT MOUNTING
HEIGHT IS ESTABLISHED

urban

+

URBAN FOUNTAINS AND FURNITURE PTY LTD.
5 TELFORD CIRCUIT
YATALA, QUEENSLAND 4207
PH: (07) 3382 7372
FX: (07) 3287 5598
WWW.URBANFF.COM.AU

COPYRIGHT DISCLAIMER

THIS DRAWING AND ALL THE INFORMATION ILLUSTRATED
HEREIN ARE SUBJECT TO COPYRIGHT. THIS DRAWING MAY
NOT BE COPIED IN PART OR WHOLE, WITHOUT PRIOR
WRITTEN CONSENT FROM URBAN FOUNTAINS AND FURNITURE
PTY LTD.

DO NOT SCALE DWG, IF IN DOUBT, ASK!

UNITS OF MEASURE

ALL DIMENSIONS ARE IN MILLIMETERS U.O.N

MM

DRAWN BY

N.FERGUSON

DATE

28/03/2025

SCALE

1:10

SHEETS

2 OF 3

DRAWING TITLE

CF420 WALL MOUNT DETAILS

DRAWING NUMBER

CF420-WMD-2

REVISION

00

MATERIAL	FINISH

REVISION	DESCRIPTION	DRAWN BY	DATE
00	ISSUED FOR INFORMATION	G.ALLAN	16.8.2023